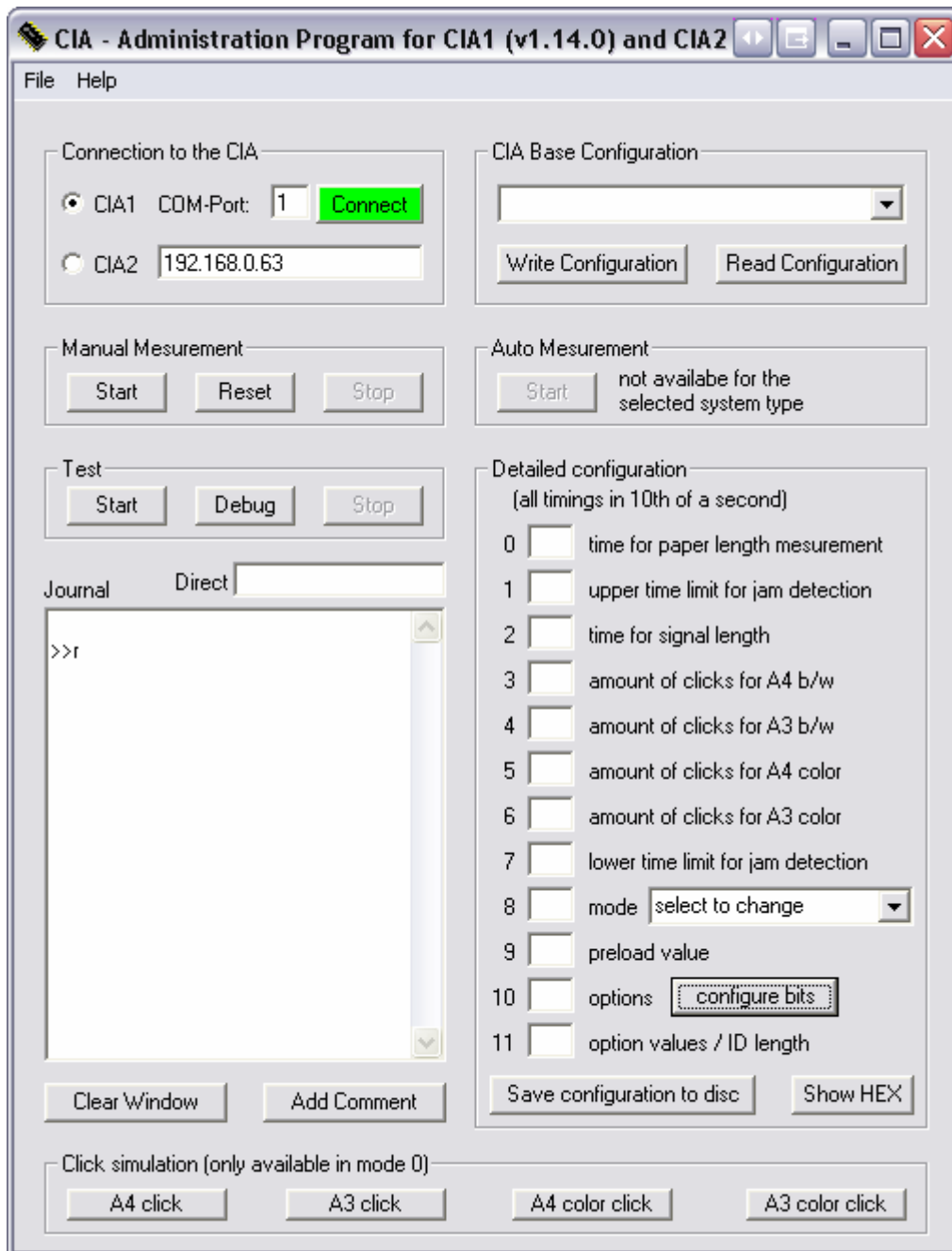


# Administration Program for the Canon Intelligent Adapter (CIA)

## Content

<b>QUICK OVERVIEW OF ALL FUNCTIONS</b>	<b>2</b>
Connection to the CIA	2
CIA Base Configuration	3
Configure bits	4
Manual Measurement	4
Test	5
Auto Measurement	5
<b>HOW TO CREATE A CONFIGURATION FOR A NEW DEVICE OF THE SAME DEVICE FAMILY</b>	<b>6</b>

## Quick Overview of all functions



### Connection to the CIA

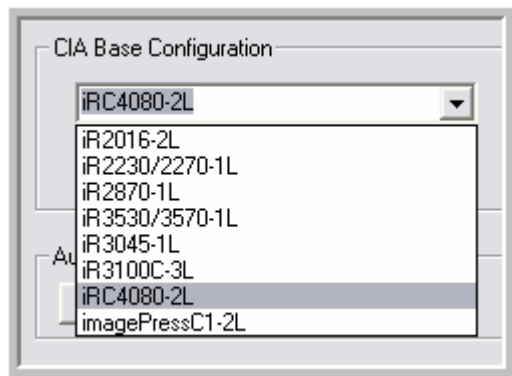
In this frame you can change the port settings for the connection to a CIA1 and the IP-Address for connection to a CIA2 on the network.

By pressing the "Connect" button the program will try to connect to the CIA in service mode.

The program is only working with a proper connected CIA. The background color of the connection button has to be green before you can use any function of the administration program.

## CIA Base Configuration

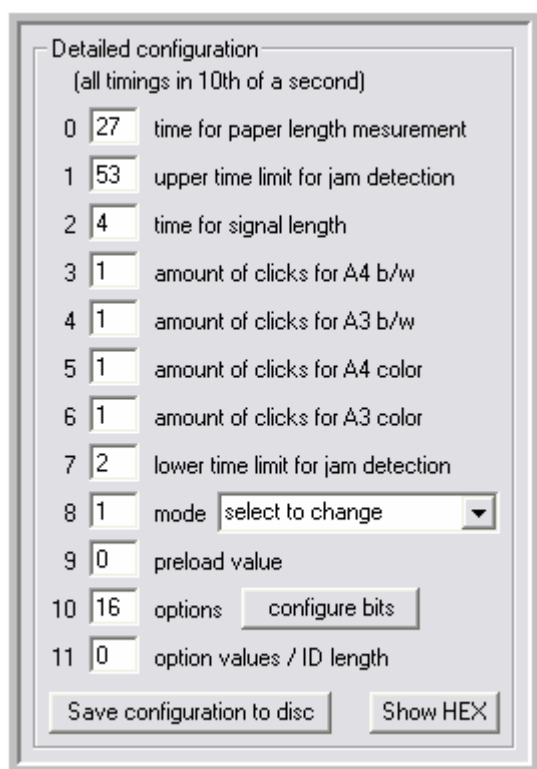
In the drop down box you can select your Canon copier model on which the CIA is connected to.



By pressing the “Transmit Configuration” button the program transfers all required settings for the chosen device to the CIA flash memory.

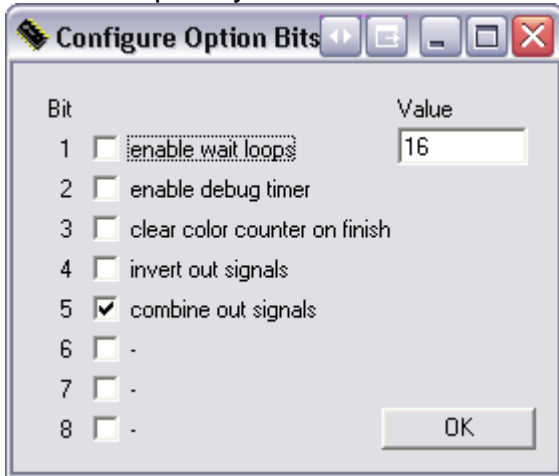
All parameters for the chosen configuration are shown in the “Detailed configuration” frame. Here you can change any parameter and save the configuration to the same or a new configuration setting. After saving you can rechoose your configuration and transfer it again to the CIA.

Please refer to the CIA documentation for more details about all parameters.



## Configure bits

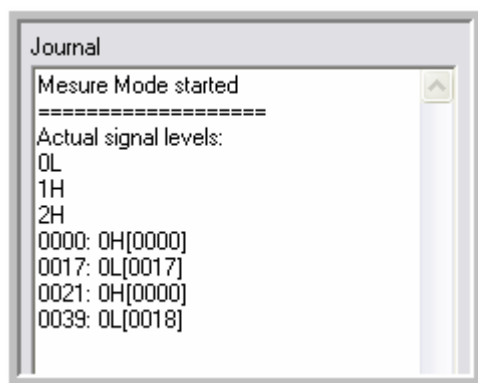
With this option you are able set several bits for a special behaviour of the CIA.



The most important ones are invert out signals and combine out signals.

## Manual Measurement

In this frame you check your connection of the CIA to the device and do a manual measurement of the connected signal lines.



In the journal you see 2 A4 copies on a iR2870 device. In this ample the CIA is only connected with one signal and therefore only the signal level for “0” is changing from 0L (signal 0 is low level) to 0H (signal 0 is high level).

In the first column you can see the total time elapsed from the first signal change, in the second column you can see the time between two signal changes. All timings are shown in 10<sup>th</sup> of seconds.

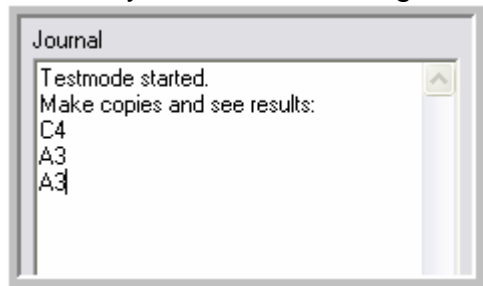
The A4 copy on the shown device took ~1,7 sec with a break of 0,4 sec between the two copies.

Pressing the “Reset” button draws a span line in the journal window and resets the total time.

By pressing the “Stop” button the manual measurement mode is left.

## Test

By pressing the “Start” button the CIA gets into its normal working mode where you can test your chosen configuration.



In the journal you can see the registered and signaled products by the CIA in short words.

Possible products are: A4 (A4 b/w), A3 (A3 b/w), C4 (A4 color), C3 (A3 color) and on some systems also: B4 (A4 b/w on heavy paper), B3 (A3 b/w on heavy paper), D4 (A4 color on heavy paper), D3 (A3 color on heavy paper).

All products on heavy paper are signaled as on normal paper.

By pressing the “Stop” button the CIA returns into the service mode.

## Auto Measurement

By pressing “Start” in this frame you will start the auto measurement function.

You have to select a device configuration of the same system family before you can start. Devices of one system family are for example:

iRC3880, iRC4080, iRC4580, iRC5180, CLC5151

After starting you are asked to do some copies on the connected device.

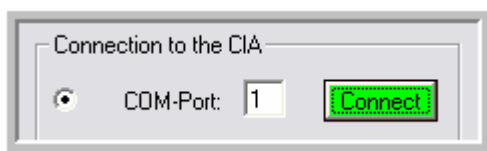
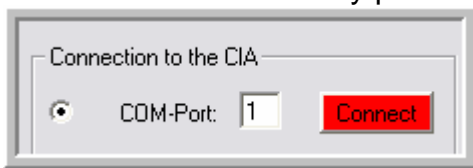
Please ensure, that the device is wake up and that the copies can start immediately after the program requests them. Otherwise you will run into a timeout.

The administration program measures the timings and calculates the proper device settings. All settings can then be stored to the same or a new device configuration.

## How to create a configuration for a new device of the same device family

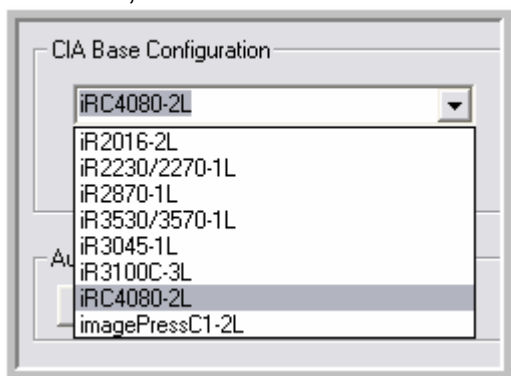
This example shows how to create a configuration for an iRC4580.

- 1) Connect the CIA to the new device as shown in the CIA documentation.
- 2) Connect the CIA to your PC's COM-Port.
- 3) Start the CIA administration program.
- 4) Establish a connection by pressing the "Connect" button:

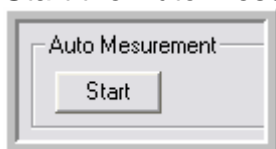


If everything is fine, the backcolor of the "Connect" button changes to green.

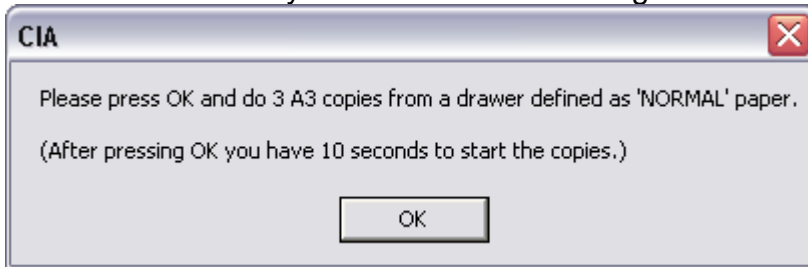
- 5) Choose a configuration of the same device family. Here we choose a iRC4080, which is slower than the iRC4580 but based on the same hardware.



- 6) Start the Auto Measurement

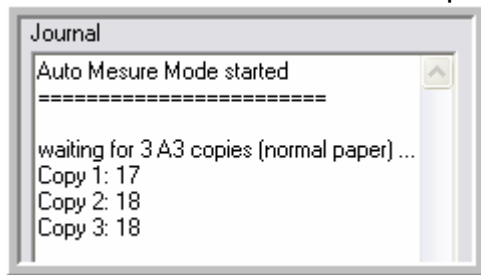


- 7) After a few seconds you should see a message like:

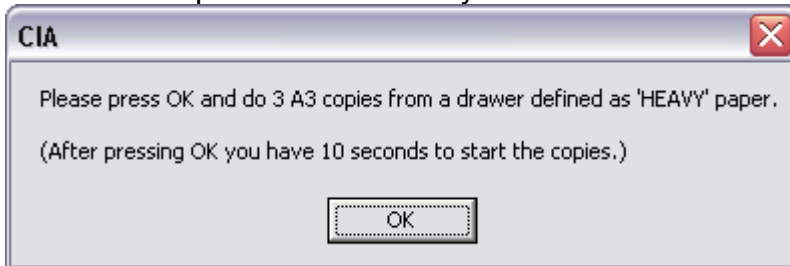


Please provide the requested paper and papersize.

- 8) Press OK and start the 3 A3 copies on the iRC within 10 seconds

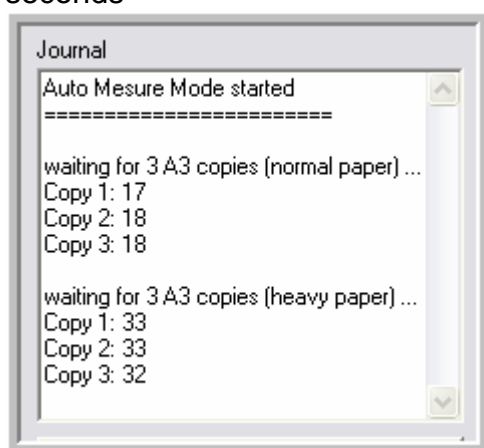


- 9) After the 3 copies have finished you should see the following message:

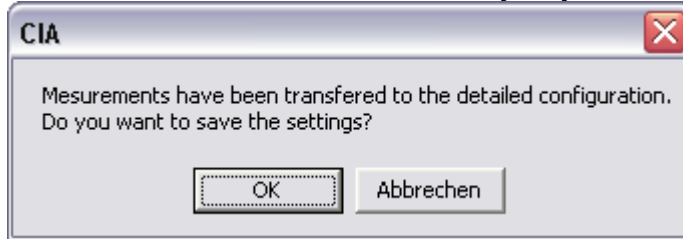


Please provide the requested paper and papersize.

- 10) Press OK and start the 3 A3 copies on heavy paper on the iRC within 10 seconds

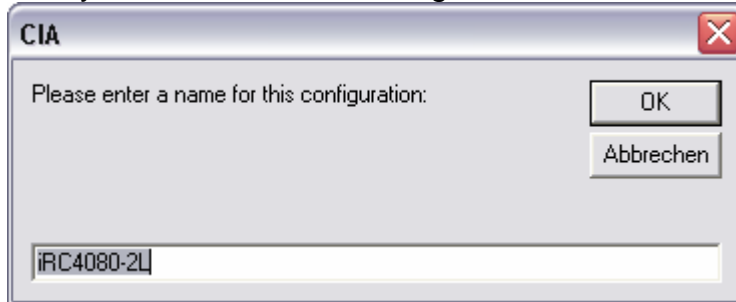


11) When automesurement is finished you are asked to save the new settings:

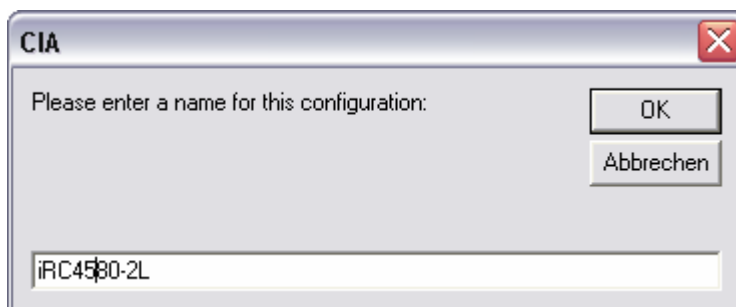


Press OK

12) Now you are asked for a configuration name:

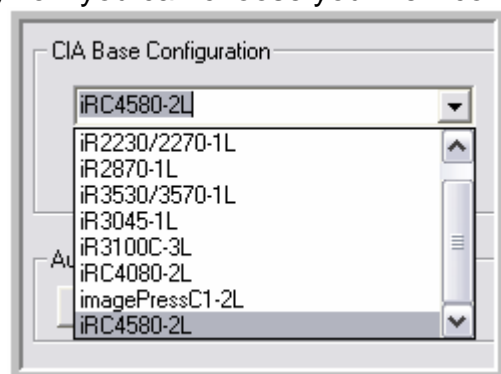


Please change the name e.g. to "iRC4580-2L" where the "2L" means: "Connected with to signal lines".



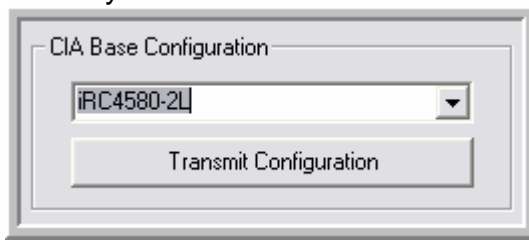
Press OK

13) Now you can choose your new configuration from the drop down box:

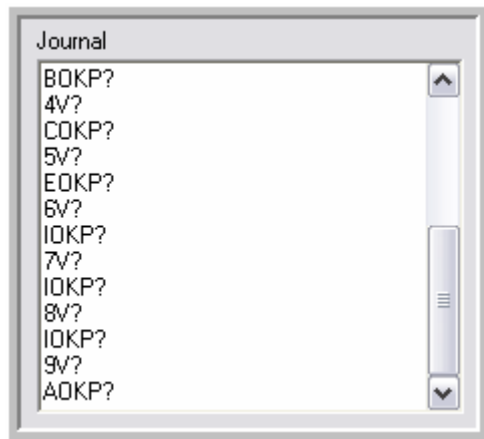




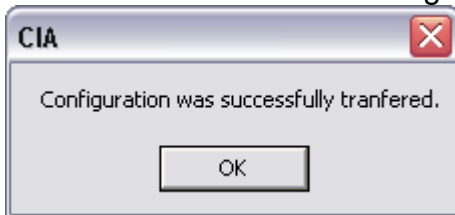
14) Now press "Transmit configuration" to store the new settings in the CIA flash memory:



The transfer will be documented in the journal:



and will finish with this message:



15) Finally you may check the results of operation with the "Test" function by pressing the "Start" button:



If everything went right the CIA should show you all products as you are making them on the copier:

